

► New HIV Diagnosis



■ At diagnosis, screen for:

- CD4 and HIV viral load
- HIV Resistance Testing (HIV Genotype)
- G6PD
- HAV IgG, HBV cAb, sAg, sAb, HCV Ab - for evidence of coinfection and immunity.
- IGRA or PPD to r/o latent TB
- HLA-B*5701 for abacavir hypersensitivity.
- CBC w/ diff, complete metabolic panel, LFTs, lipids, fasting glucose or HgA1c.
- STI screen: RPR, GC/CT (incl. extra-genital), trichomonas.
- Toxo IgG for evidence of prior exposure (counsel to avoid exposure if negative).
- Consider CMV IgG for lower -risk patients (i.e. non-MSM and non-PWID): if negative, avoid CMV+ blood products.
- Consider VZV antibody and vaccinate if non-immune and CD4>200 cells/mm³.
- Perform full physical and mental health assessment at diagnosis and at each follow-up visit as clinically indicated.

■ Recommended follow-up visits:

- 1 week after ART initiation
- every month until viral load suppression, then every 3-6 months

► Chronic HIV

■ Treatment: ART should be started as soon as possible.

- **DHHS Recommended initial regimens** for most people living with HIV (2 NRTIs + 1 INSTI):

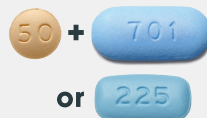
Biktarvy®: Bictegravir/emtricitabine/TAF



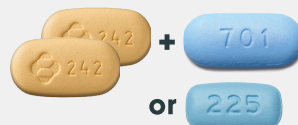
Triumeq®: Dolutegravir*/abacavir/lamivudine (only if HLA-B5701 negative)



Tivicay® + Truvada® or Descovy®:
Dolutegravir* + tenofovir/emtricitabine (TDF or TAF ok)



Isentress® + Truvada® or Descovy®:
Raltegravir + tenofovir/emtricitabine (TDF or TAF ok)



- Also consider for an initial regimen:

Symtuza™: Darunavir/emtricitabine/cobicistat/TAF



■ Check the following labs:

- **CD4:** Q3-6 months in first 2 years after initiation of ART. After 2 years of ART with consistently suppressed viral load: CD4>300-500 cells/mm³ monitor annually. CD4>500 cells/mm³: monitoring is optional.
- **Viral load:** 2-8 weeks after ART initiation, then every 4-8 weeks until suppressed. First 2 years of ART: Every 3-4 months. After 2 years of ART with consistently suppressed viral load: Q6 months.
- **Cr, LFTs, CBC w/ diff:** Q3-6 mos. UA for proteinuria Q6-12 months if on TDF or TAF.
- **Fasting lipid panel:** Annually, if abnormal, Q6 months.
- **Fasting glucose or HgA1c:** Annually, if abnormal, Q3-6 months.
- **TB screen:** Annual IGRA (e.g., Quantiferon) or PPD.
- **Repeat resistance testing:** In setting of treatment failure on ARVs—ensure that INSTI resistance testing is included if patient has been exposed to integrase inhibitors.

**Avoid or discuss potential risks of initiating dolutegravir-containing regimens in patients who are pregnant <8 weeks from sure LMP, or in patients with childbearing potential.*

■ STI screening

- Screen for STIs annually at minimum, more frequently (Q3-6 months) as clinically indicated if presence of behaviors that elevate risk for STIs
- GC/CT vaginal/cervical/urine for sexually active patients
- GC/CT oropharyngeal swab for patients reporting receptive oral sex
- GC/CT rectal swab for patients reporting receptive anal sex
- Syphilis (RPR)
- Hepatitis C and hepatitis B serologies

■ Opportunistic Infection Prophylaxis:

- P. Jiroveci (PCP) if CD4 <200 cells/mm³
- Toxoplasmosis if CD4 <100 cells/mm³
- Mycobacterium avium complex (MAC) if CD4 <50 cells/mm³
- CMV retinitis screen if CD4 <50 cells/mm³

■ Immunizations:

- HBV: Give series at double dose (40mcg). Check titers (HBsAb) if received standard series prior and if not immune, repeat series at double dose.
- HAV for at-risk patients
- Flu shot annually (inactivated; not live)
- Pneumococcal vaccine (PCV 13 and PPNV23)
- Tdap
- HPV vaccine (all men and women up to 45 years old)

■ Age-Appropriate cancer screening:

- Cervical cytology at baseline and repeat 6-12 months later, then annual thereafter if neg (refer for colposcopy if abnormal). If 3 consecutive pap smears are negative, may spread out pap smears to Q3 years. Avoid HPV co-testing for patients <30 years old. See OI guidelines for screening frequency if HPV co-testing available.
- Consider annual anal cytology for patients reporting receptive anal sex, patients with anal warts, patients with cervical dysplasia present (no clear consensus in DHHS guidelines currently; discuss risk:benefit of screening).
- All other cancer screenings follow routine primary care healthcare maintenance guidelines for general population (i.e. mammography, colorectal screening).

■ Screen for co-morbidities and address psychosocial well-being, including:

- Ask about current priorities: "What is most important to you right now?"
- Screen and offer support for mental health and psychiatric conditions including depression, anxiety, PTSD
- Screen and offer support/treatment for substance, tobacco, and alcohol use disorder
- Screen and offer support for unstable housing and food insecurity
- Screen and offer support for history of (and/or current) trauma
- Identify and troubleshoot strengths and barriers to medication adherence
- Assess family planning desires and sexual health and well-being for all patients
- Conduct comprehensive transmission risk reduction counseling (i.e. Treatment as Prevention, "Undetectable=Untransmittable"). Offer PEP or PrEP if indicated/appropriate for HIV-negative partners.
- Offer support for disclosure of diagnosis to partners, family and friends

Author: Monica Hahn MD MPH MS AAHIVS. Clinical Director, Pacific AIDS Education Training Center. Assistant Clinical Professor, UCSF Department of Family and Community Medicine. **Contributors:** Carolyn Chu MD and Sophy Wong MD.

Sources:

Panel on Antiretroviral Guidelines for Adults and Adolescents. *Guidelines for the Use of Antiretroviral Agents in Adults and Adolescents Living with HIV*. Department of Health and Human Services. aidsinfo.nih.gov/guidelines/html/1/adult-and-adolescent-arv/0.

Primary Care Guidelines for the Management of Persons Infected with Human Immunodeficiency Virus: 2013 Update by the HIV Medicine Association of the Infectious Diseases Society of America. *Clinical Infectious Diseases* 58; 2013; 58 : 1 -34

This project was supported by funds received from the State of California, Department of Public Health, Office of AIDS. This project was also supported by the Health Resources and Services Administration (HRSA) of the U.S. Department of Health and Human Services (HHS) under cooperative agreement #5 U10HA29292. Regional AIDS Education and Training Centers. This information or content and conclusions are those of the author and should not be construed as the official position or policy of, nor should any endorsements be inferred by HRSA, HHS or the U.S. Government.

Pill photos: US DHHS National Institutes of Health (NIH) and Test Positive Aware Network (TPAN).

Feedback/questions: paetc@ucsf.edu.