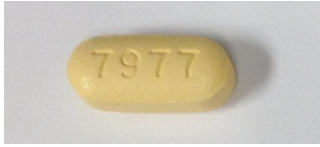


Hepatitis C – 12 week treatment regimen – Genotype 2



Sovaldi (Sofosbuvir) 400 mg tablet once daily



Ribavirin 200 mg tabs – 3 tabs in AM, 3 tabs in PM

you **must stay in very good contact with _____ or your pharmacy to make sure you receive all medications on time and don't miss any doses due to shipping or approval delays*_*

Clinic Visit schedule

Start of Treatment - Week 0 - initial visit (all baseline labs should be completed)

Week 2 - (CBC with diff, PHQ-9)

Week 4 - (CBC, CMP, HCV RNA, Pregnancy test)

Week 8 - (CBC)

End of Treatment - Week 12 - (CBC, CMP, HCV RNA, TSH, Pregnancy test)

Test of Cure - Week 24 - (CBC, CMP, HCV RNA, TSH)

If you have side effects, questions, difficulty getting refills, or other issues, call _____.